



Pānui #1 - Auckland Region W1 Trials 2022

Tēnā koutou ngā kaihoe o te rohe o Tāmaki Makarau. Ka nui te mihi ki a koutou mai te poari nei. Kua tae ki te wā ki te whakaritenga te hinengaro me te wairua o ngā tangata mō te whakataetae matua ā tērā tau. Nau mai, piki mai ki te roto o Pupuke. Karawhuia tātou.

The AROCA W1 trials will be held at Sylvan Park, Lake Pupuke on Saturday 8th January and Sunday 9th January

Currently Auckland is at Alert Level 3, Step 2

People in Auckland can now participate in a wider range of recreation activities that were previously not permitted at Alert Level 4

These include

- Water-based activities involving sailing boats, motorised boats or other craft like jet skis, and scuba diving
- Driving to the beach, even if it is not local
- Outdoor exercise classes, for example, yoga or bootcamp, if they do not involve any physical contact with others
- Fishing from a motorised boat or vessel

For more detailed information, please check the following web site

<https://covid19.govt.nz/activities/sports-and-recreation/#sports-and-recreation-at-alert-level-3>

The Board has made the decision to run the event at Orange or Green Level but with a 100-person maximum capacity – here is the link to the COVID Protection Framework (traffic light system) - <https://covid19.govt.nz/alert-levels-and-updates/covid-19-protection/>

Please note the Regionals will not run if Auckland is in Red Level

Event Information (Orange Level with a limited capacity)

Events will be held over 250m & 500m, for age grades from Intermediate to Master 80's

This is the qualifying event for W1 paddlers wanting to represent the AROCA region at the National Sprints.

The format for the event will be as follows

- One race only per paddler per event
- Fastest times will qualify
- No progressions
- No registration on the day
- No prizegiving
- No W6 racing

Covid Requirements

- Record keeping and scanning will be mandatory
- Face coverings will be mandatory
- Vaccination certificates/passes will be required (Age 12yrs 3 months+)
- Photo ID may also be requested
- Children under 12 do not need to show proof of vaccination

- 1m distancing
- No spectators,
- Hand Sanitiser & cleaning aids will be available
- Attendees are limited to paddlers, a support person per paddler and officials
- No congregating

Key Dates are

Monday 22nd November 2021: Entries open

Friday 31st December 2021: Entries close and any final roster changes

Wednesday 5th January 2022: Lane Draw Available (on the AROCA & WANZ website)

Vaccination Certificates

Under the COVID Protection Framework, for this event to go ahead. All participants, volunteers, contractors – anyone onsite with the event – will need to provide a COVID-19 Vaccine Certificate.

At this stage – this does not apply to any paddlers under the age of 12.

You can find more information regarding the COVID Vaccination Certificate here:

<https://covid19.govt.nz/covid-19-vaccines/covid-19-vaccination-certificates/>

To race at the 2022 Waka Ama Sprint Nationals, all attendees will need to be fully vaccinated and produce proof of a COVID Vaccine certificate. More information regarding the Sprint Nationals and Vaccines can be found here - <https://wakaama.co.nz/stories/read/1005798>

Entries and Race Information

All entries must be completed by the Club Administrator, waivers will be done online and must be completed at the same time entries close.

Entries Open – 22nd November

Entries Close – 31st December

All entries need to be verified members of NKOA. New paddlers must have completed their NKOA ID process.

Late entries will not be accepted.

Age Categories

Age is taken as reaching the specified age in 2022 (i.e., next year). This enables you to race in the same division as you will at the coming 2022 nationals. If in doubt see the <http://www.wakaama.co.nz/agedivisionchecker> or email admin@aroca.co.nz for clarification.

Payment Instructions

All entry fees are to be paid by 5th January. Clubs will be able to see roster and invoice details on the members area of the website. A follow up invoice will also be sent to clubs.

All clubs must pay directly to the AROCA account and ensure the reference is clear to ensure payment is reconciled.

Paddler Fees are non-refundable. If a paddler is withdrawn after the entry closing date there will be no refund. Paddlers from a club with outstanding fees will not be allowed to participate.

ENTRY COSTS (per paddler) 2021			
Division	W1 250m	W1 500m	Combo 250m & 500m
Intermediate	NA	\$10.00	NA
J16	NA	\$15.00	NA
J19	\$15.00	\$15.00	\$20.00
Seniors	\$15.00	\$20.00	\$25.00

Suggested Race Schedule

The race schedule will depend on the number of entries (last years data used to estimate)

Division	Estimated No of Races	Start Time
Intermediate	4	8.30am
U23 W1 500 & M70's	3	10.00am
J16	6	11.30am
J19 W1 500	6	1.00pm
J19 Dash	4	2.30pm
Golden Masters	3	8.30am
Senior Masters	4	10.00am
Masters	4	11.30am
Prem Dash	5	2.30pm
Prem 500	3	3.00pm

Last division day 1

Last division day 2

Race Rules

NKOA/WANZ Race rule will apply.

<http://www.wakaama.co.nz/pages/read/1003423>

W1 Nationals Qualification Information

This is the qualifying event for the 2022 NKOA Sprint Nationals. Paddlers may only paddle for one club. Regions are allocated 4 entries for each race division plus extra quota for having finalists in the previous year's nationals. The quota will be filled from placings in each race division.

W1 Quota

Division	Men	Women
Intermediates	5	6
J16s	9	7
J19s	10	8
O23s	8	9
Premier	7	6
Masters	7	6
Senior Masters	6	8
Golden Masters	7	7
Master 70s	6	8
Master 75	6	6
Master 80	6	6

W1 Compliance

All canoes must comply with section 7.1 of the NKOA rules for waka ama racing (NB: minimum weight fully rigged 16kg).

There will be no pre-event waka weigh in this year, instead there will be a spot check after each race.

Paddlers whose waka are found to be under the 16kg minimum specification will incur a penalty.

All W1s must have lane number holders, as per Waka Ama New Zealand race rules.

Paddlers must arrange to have their own W1. Paddlers should NOT assume that they will be able to use other paddlers' W1s on race day. (We do not recommend sharing waka, paddles, lifejackets etc. However, if sharing is required, all equipment must be sanitised between races.)

Loading up and races will not be delayed for paddlers waiting for canoes. Each paddler may have 1 support person to assist with the loading and unloading of waka.

Clubs and coaches please note that your paddlers must be of a level where they can competently and confidently take the start line and complete the race. Any paddlers who fail to reach the start line within a reasonable time will be withdrawn from the race.

Paddlers going outside of their lane will be disqualified.

Withdrawn or Disqualified (DQ'ed) paddlers *will not receive refunds*.

Waitlist

Paddlers unable to participate at the regionals wanting to make quota for Nationals will be required to write to the Race Committee requesting their inclusion on the Waiting List. This should be sent from your club to admin@aroca.co.nz.

The fee applicable for inclusion on the waiting list is the same as the event entry fee for that race. Participants who are accepted on the waitlist are included at the bottom of the quota list.

Participants from Regionals who compete but do not qualify can be placed on the waitlist for Nationals with the waitlist fee included in their regional entry fee.

NOTE: For paddlers who do not make the quota, the next two racers in each division will be automatically added to the waitlist. If you do not wish to be on the waitlist you must advise AROCA by the 10th January

Any additional paddlers who wish to be on the waitlist must also notify AROCA be added at the bottom of the waitlist in order of results. The close off date for wait list inclusion will be the 10th January

Arriving on Site

Please only arrive for your specific race – check race schedule for further information.

Paddlers will be marshalled according to their race numbers. Those with whanau in more than one race but who arrive at the same time will be staged in a different area and must stay there until their race comes up. No congregating between races or after races, please leave as soon as you have finished racing.

Club and Event Requirements

Support Boats

We require three support boats for the event. Boats will be paid \$300 per day to assist, if you wish to be included, please contact admin@aroca.co.nz. You must ensure your boat is safe and suitable for the event.

Tent allocation

There will be no tents at this year's events to assist with social distancing

Vendors

There will not be any vendors this year to address capacity issues

Volunteers

All participating clubs are expected to provide non paddling volunteers for each day of the event. A draft schedule will be included in pānui 2. Volunteer numbers will be based on two volunteers per club per day as an approximate. Any volunteers wanting to assist at the event can contact admin@aroca.co.nz

Getting vaccinated

There are lots of ways we can protect against COVID-19. Getting vaccinated is the most effective way to protect ourselves and others. The vaccine is especially important to protect those who are at higher risk of serious illness. All volunteers will need to be fully vaccinated two weeks prior to the event.



The vaccine helps
protect us all

[Covid19.govt.nz](https://www.covid19.govt.nz)
New Zealand Government

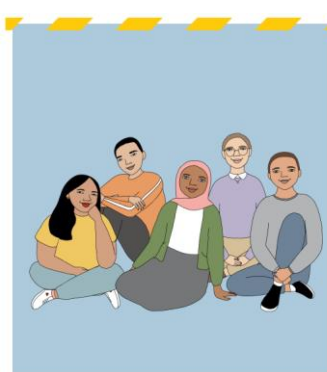
Unite
against
COVID-19



The vaccine keeps
us together

[Covid19.govt.nz](https://www.covid19.govt.nz)
New Zealand Government

Unite
against
COVID-19



Stronger immunity
Greater possibilities

[Covid19.govt.nz](https://www.covid19.govt.nz)
New Zealand Government

Unite
against
COVID-19

Weather Conditions or Other Delays

In case of severe weather conditions on race day, the race director retains the right to stop, postpone and/or cancel races on race day. **Please note that we will be unable to refund race fees in this case.** If delays occur, races may run later than scheduled

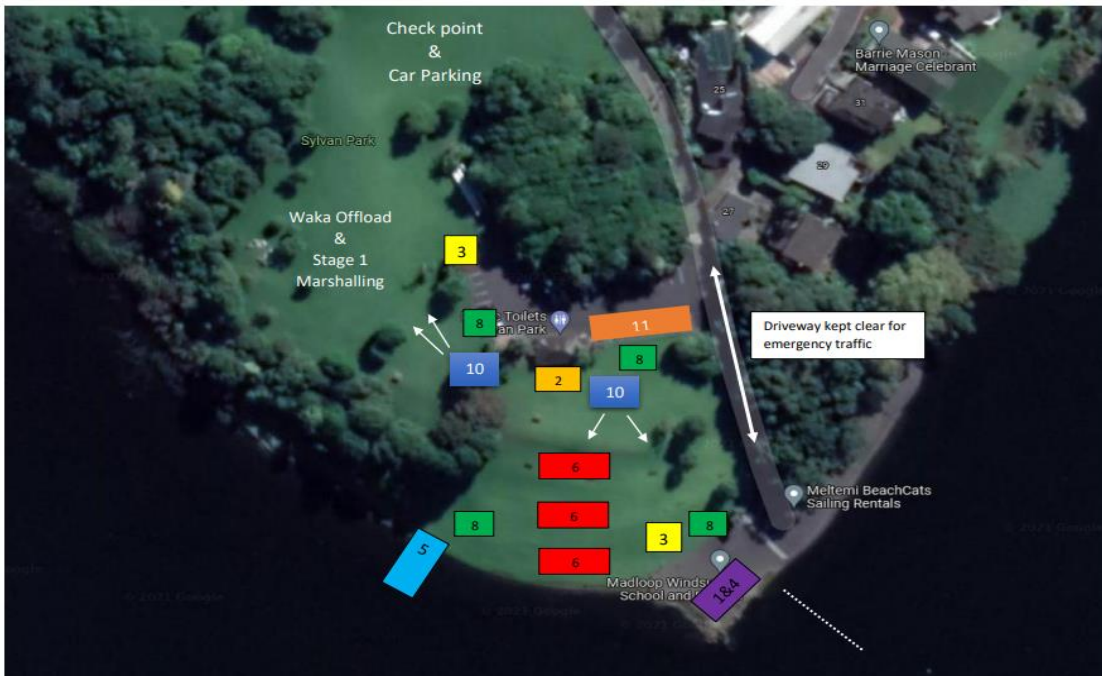
Race Course Layout



Site Plan

AUCKLAND REGION OUTRIGGER CANOE ASSOCIATION

AROCA REGIONAL SPRINT SITE PLAN 2021



Sylvan Park Site Plan 2021

Key:

1. Admin
2. Catering for Volunteers
3. Extra Toilets
4. Results Tent
5. Loading Bay
6. Marshalling
7. Car Parking
8. Bins
9. Finish Line
10. Sound
11. Volunteer Parking

